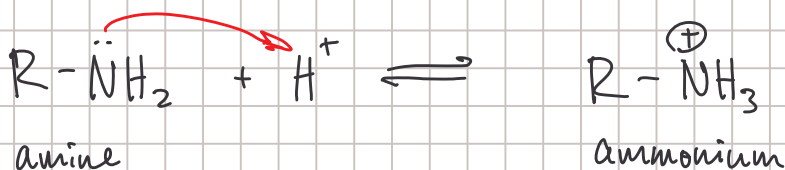
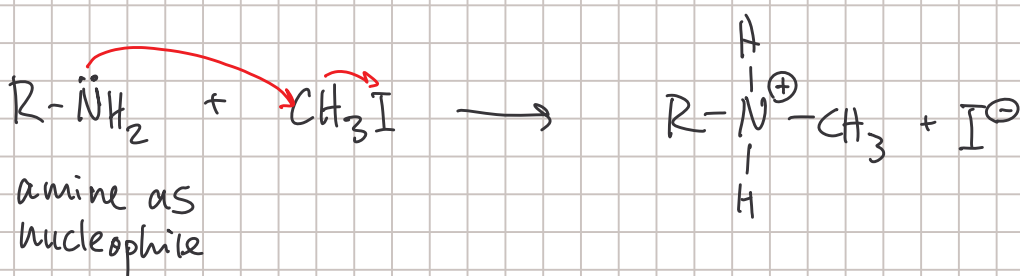
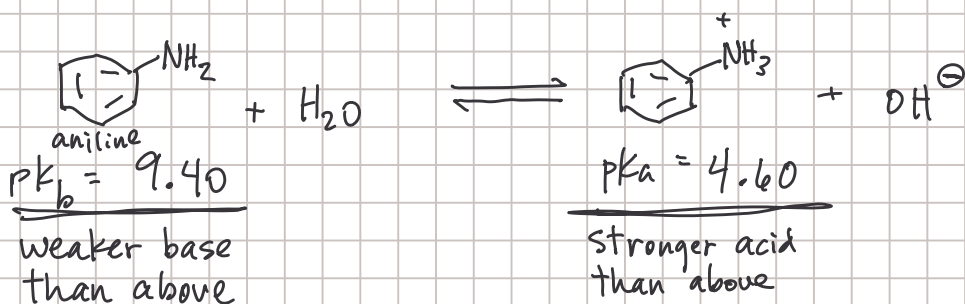
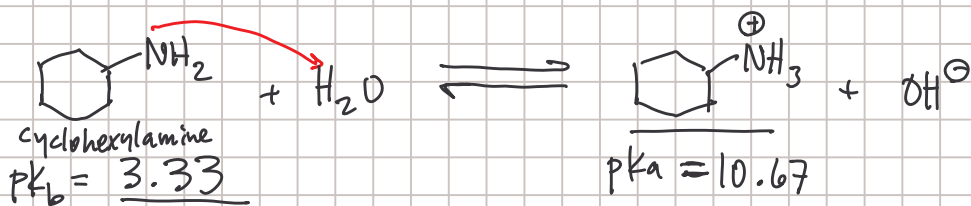


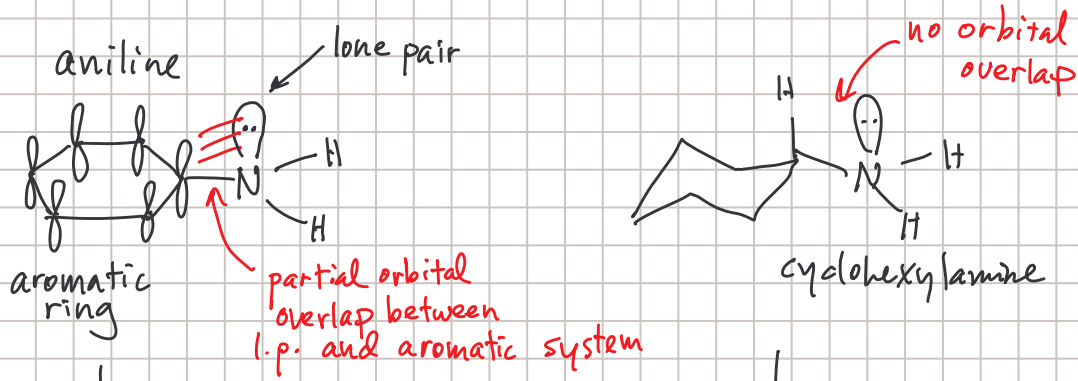
Exam 3 Monday Apr 10  
 No class Fri Apr 7

### Basicity of amines

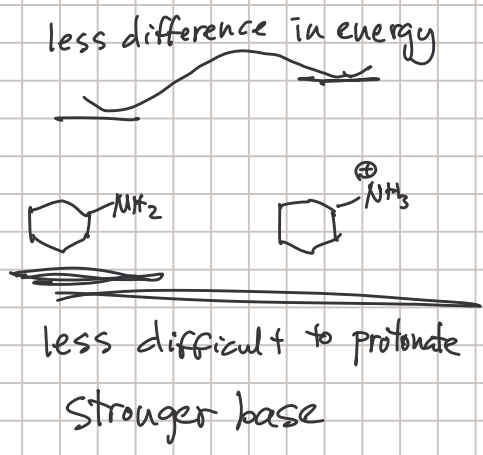
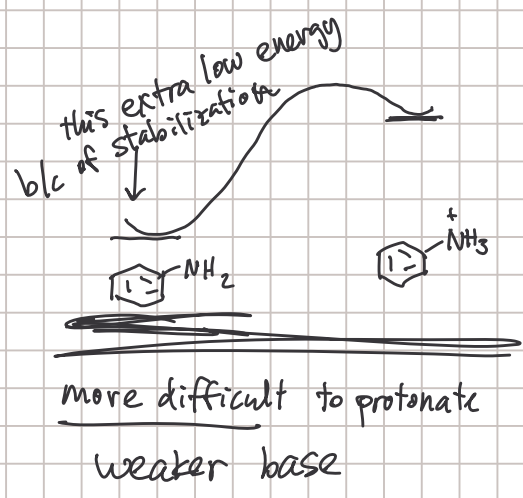
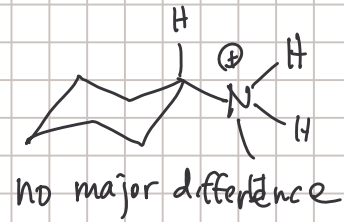
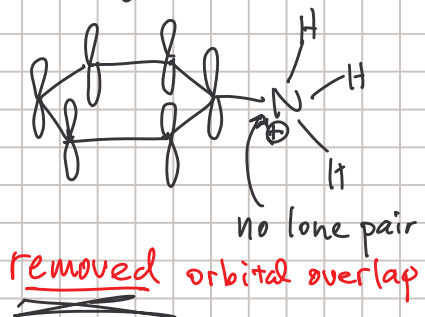


$$\begin{array}{c}
 \text{p}K_b + \text{p}K_a = 14 \\
 \curvearrowright \\
 \text{of conjugate pair}
 \end{array}$$





extra stabilization!



★ When comparing the basicity of two amines:

→ if the base is stabilized, it becomes less basic

→ if the conjugate acid is stabilized, it becomes more basic

