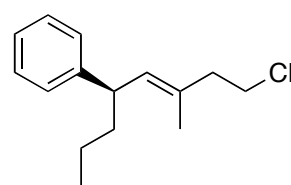
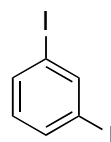
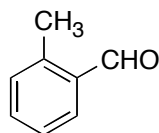
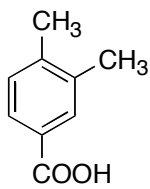
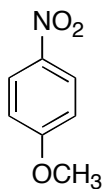


1. Name the following compounds:

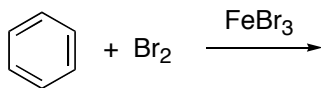
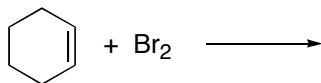


2. Draw structures for the following names:

*m*-bromoaniline      (*S*)-2-phenylpropan-1-ol

benzyl *t*-butyl ether    tropylium fluoride    1,2,3,4-tetraphenylnaphthalene

3. Complete the following two reactions, with full mechanisms for each:



4. Draw the three isomers of trichlorobenzene. How many NMR resonances will each have? What will be the multiplicity and coupling constant(s) of the resonance(s) in 1,3,5-trichlorobenzene? If you have time, predict the multiplicities and coupling constants for resonances in the other isomers.