

PREPARING FOR THE FAFSA -- FINANCIAL AID

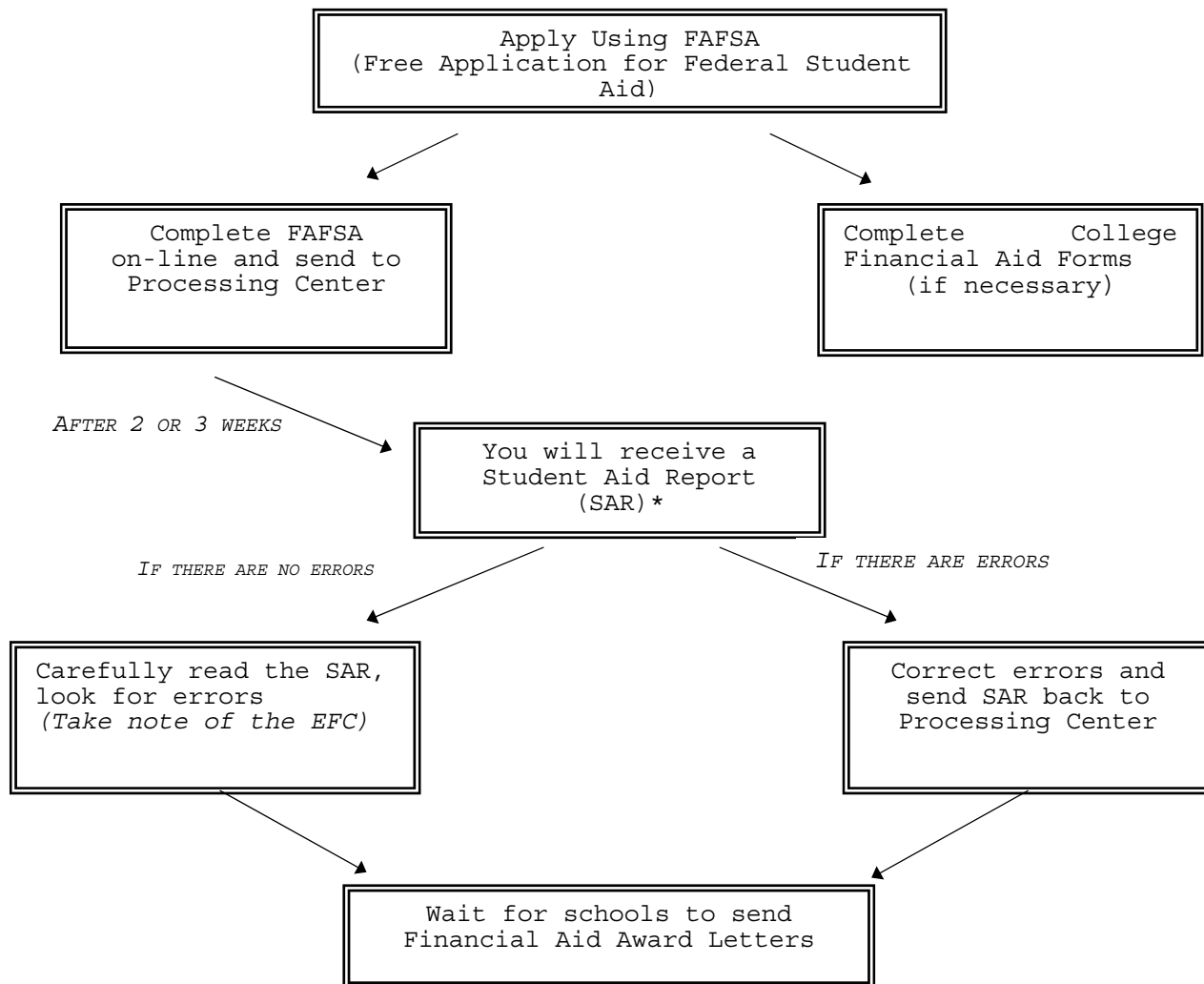
FAFSA = Free Application for Federal Student Aid

SAR = Student Aid Report

EFC = Expected Family Contribution

To apply for financial aid you must fill out **many** forms, the most important form is the **FAFSA**. Students who are applying for financial aid must:

1. Fill out the **FAFSA**; send it to the processing center.
2. Receive and look over the **SAR** from the processing center (it will also be sent to colleges/ universities).
3. Make corrections to **SAR** if necessary, send it back.)
4. Send signed **SAR** to schools that didn't receive it.



*30% of all financial aid applicants are asked to *verify their information*. If chosen to do **verification**, you must fill out a verification form and send it and a copy of student and parent/guardian's taxes to each school to which you are applying.

To fill out the FAFSA you will need:

1. Social Security #
2. Driver's License #
3. Taxes – both parent(s)/guardian(s) & student
4. PIN Number
5. Alien registration # (if applicable)

The whole purpose of filling out the FAFSA is so the government can determine your EFC. This number, which is on the **SAR**, tells the college how much you can pay for college, they will use this information to determine how much financial aid to give you.

UPWARD BOUND FINANCIAL AID WORKSHOP
Saturday, February 23rd

This event is **required**, **UB seniors and one parent/guardian** must attend!

You must bring everything listed in the box above that applies to you.

Students and a parent will need to have registered for a pin at www.pin.ed.gov in order to complete the FAFSA electronically. Please bring this pin number with you to the workshop.

Don't forget, most colleges will require additional forms.

To receive credit for this months assignment, you must do 2 things:

- 1. Complete the financial aid quiz**
- 2. turn in a confirmation page that you and your parent have applied for your pin number at www.pin.ed.gov**

FINANCIAL AID QUIZ

1. When is the Upward Bound Financial Aid Workshop? _____
2. Who has to come to the Upward Bound Financial Aid Workshop? _____
3. Which of the following items must be brought to the financial aid workshop so you can successfully fill out your financial aid forms: (circle all that apply)

- | | | |
|--------------------------------------|------------------|------------------------------|
| Pokemon Cards | Driver's License | Social Security Number |
| Student's 2007 Taxes | OREO Cookies | Parent/Guardian's 2007 Taxes |
| Alien Registration # (if applicable) | Comic Books | PIN Number |

4. What does FAFSA stand for?
5. After you send in the FAFSA, what will you receive in the mail?
6. Where will you find your EFC (expected family contribution) ?
7. Why is the EFC important?

Most schools require an additional form (besides the FAFSA) sent directly to them. List your schools below. Which ones require their own financial aid form? (Check their web-site or call them if you don't know.)

Name of College/University

Additional Financial Aid Form

_____	Yes	No
_____	Yes	No
_____	Yes	No
_____	Yes	No