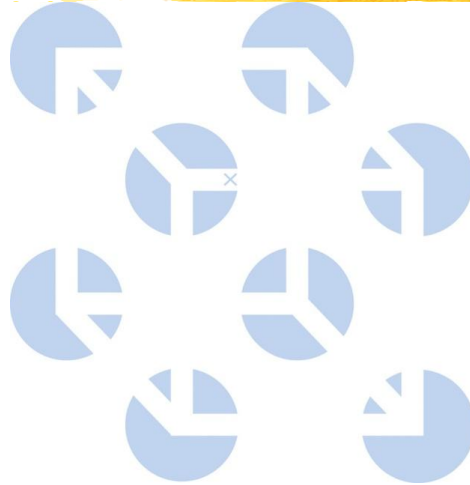


Perception



Perceptual Organization

- ⌘ Some of the best examples that perception involves organization of sensory input was provided by the Gestalt Psychologists.
 - ⌘ Gestalt psychologists hypothesized that “the whole is greater than the sum of the parts.”
 - ⌘ They were interested in showing the global nature of our perceptions.
-

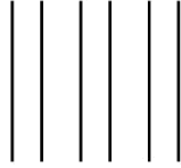


Perceptual Organization-Gestalt

⌘ We tend to integrate pieces of information into meaningful wholes based on rules:

⌘ Grouping Principles

- ☒ proximity-
- ☒ similarity-
- ☒ continuity-
- ☒ closure-
- ☒ connectedness-



Proximity



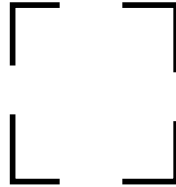
Similarity



Continuity



Connectedness



Closure



Depth Perception

- ⌘ One of our more important perceptual abilities involves seeing in three-dimensions
 - ⌘ Depth perception is difficult because we only have access to two-dimensional images
 - ⌘ How do we see a 3-D world using only the 2-D retinal images?
-

Depth Perception Cues

- ⌘ Cue –
-

Types of Depth Cues

⌘ Depth cues are usually divided into categories:

☒ Monocular –

☒ Binocular -

Perceptual Organization- Depth Perception

⌘ Monocular Cues

☒ relative size

☒

☒ interposition

☒

☒ relative clarity

☒

☒ texture

Perceptual Organization- Depth Perception



Interposition

Perceptual Organization- Depth Perception

⌘ Monocular Cues (cont.)

☒ relative height



☒ relative motion



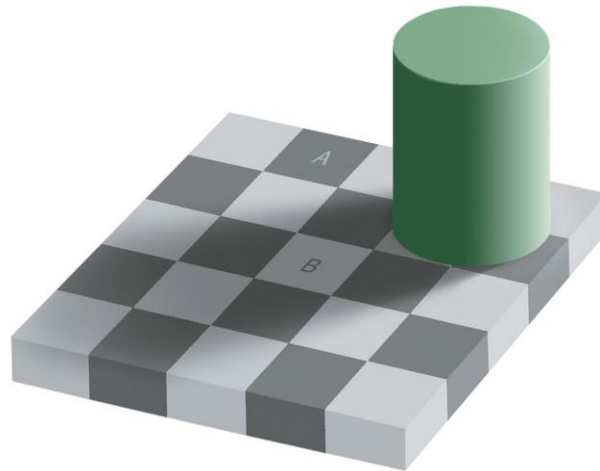
☒ linear perspective



☒ relative brightness

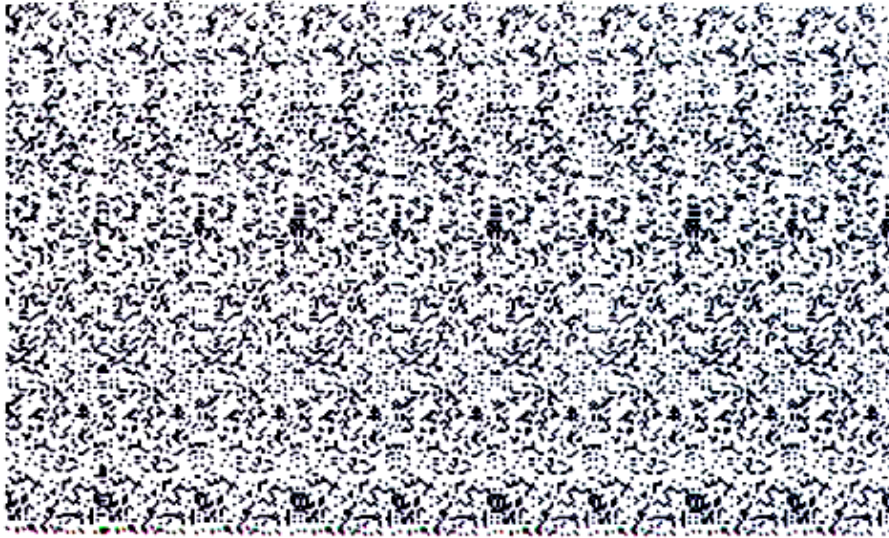


Perceptual Organization- Brightness Contrast



Binocular Depth Cues

- ⌘ Monocular depth cues allow us to see in 3-D with the view of only one eye, but our best depth perception occurs if we look through both eyes.
 - ⌘ This is because our right and left eyes see a slightly different view of the world.
 - ⌘ This difference between the image in the two eyes is known as Binocular Retinal Disparity.
-



The Stroop Effect: Learned Automaticity



Is There Extrasensory Perception?

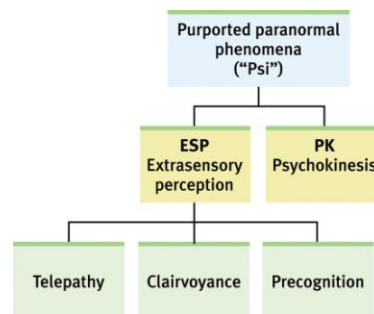
From Module 17

Perception without sensory input is called extrasensory perception (ESP). A large percentage of scientists do not believe in ESP.

17

Claims of ESP

Paranormal phenomena include claims of astrological predictions, psychic healing, communication with the dead and out-of-body experience, but the most relevant are telepathy, clairvoyance and precognition.



18

Claims of ESP

⌘ Telepathy:

⌘ Clairvoyance:

⌘ Precognition:

19

Premonitions or Pretensions?

Can psychics see the future?

Can psychics aid police in identifying locations of
dead bodies?

What about psychic predictions of the famous
Nostradamus?

The answers to these questions are NO!

Putting ESP to Experimental Test

In an experiment with 28,000 individuals, Wiseman tested psychically influencing or predicting a coin toss. People were able to correctly influence or predict a coin toss 49.8% of the time.



21